

Mississippi Mills 2025 Capital and Operating Budget

Childcare
Anita Legault

October 24, 2024



Agenda

Binder 2

Department Overview

Recent Accomplishments and Investments

Draft Budget Summary

Draft Budget Highlights

Draft Capital Budget

Draft Operating Budget

Staffing

Other Notes and Considerations

Binder 1





Childcare 2025 Overview, Accomplishments, and Draft Budget Summary

Department Overview

Mississippi Mills Childcare services offers care to children from 6 weeks to 12 years of age. Care is offered at 4 locations.

- State Street: Infants, Toddler and Preschool
- Holy Name: Toddler , Preschool, & Kdg and School Age B&A
- R.Tait McKenzie: : KGT and School Age B&A
- Naismith Public School: KGT and School Age B&A

Licensed capacity

- 379 children

Our goal:

- to continue offering a system of responsible, high quality accessible early years program that contribute to the overall health of the young child.



Recent Accomplishments & Investments

Completed Mill work and repairs to 208 State Street, main floor (cupboards, counter tops and sinks).

Received County capital funding of \$6,709.23 to cover Mill Work and repairs and \$10,377.14 to cover play-based materials.

Flat roof repairs completed at 208 State Street

Outdoor play area repairs to retaining walls and ground cover completed.

Invested in new shade pergola at 208 State street for future installment.

Completed financial templates for Lanark County and Province

Installation of High-Speed Bell Fibre at 208 State Street

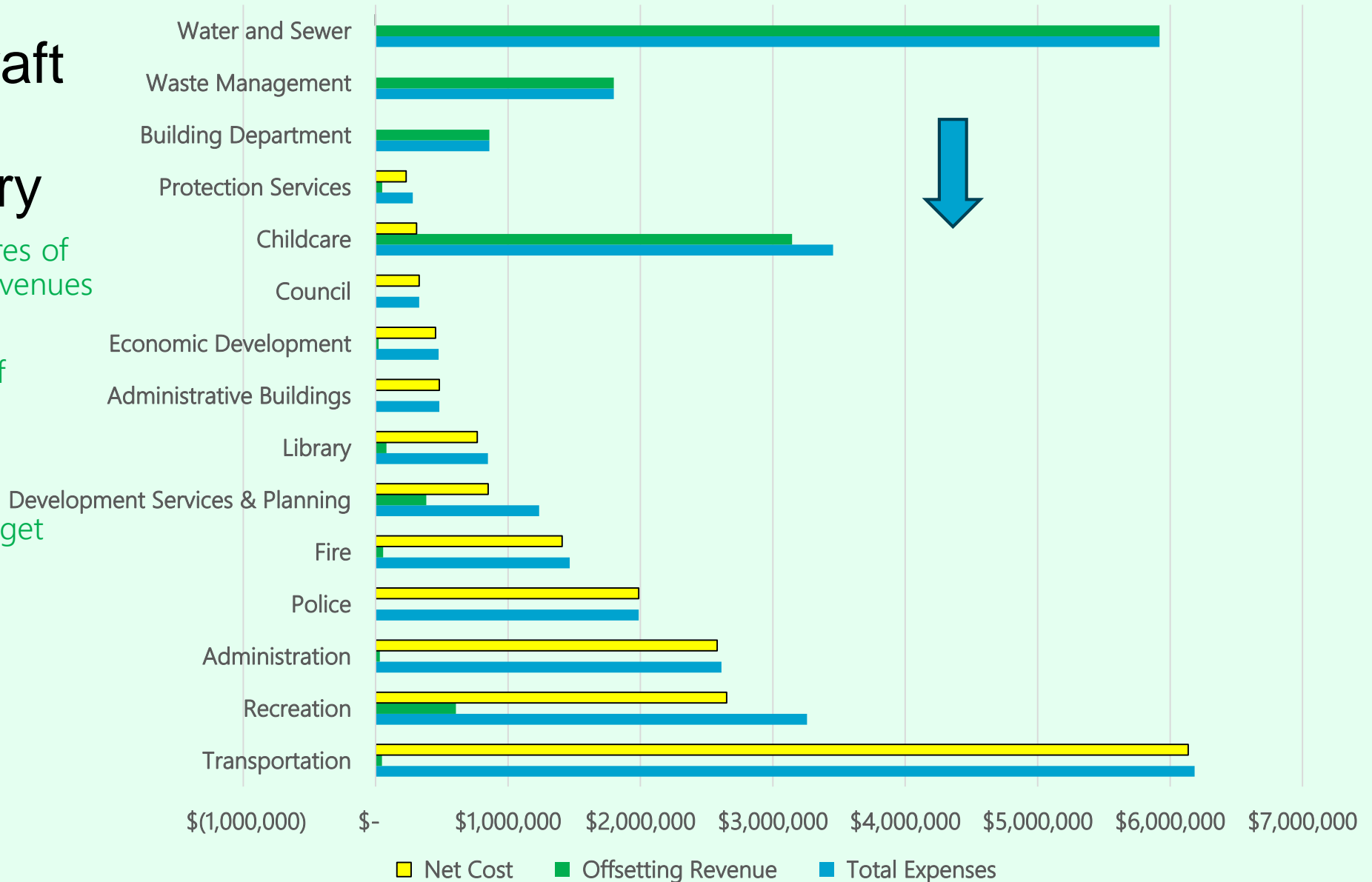
Continue to work with Lillio program with parental invoicing



2024 Draft Budget Summary

- Annual expenditures of \$3.5M offset by revenues of \$3.1M
- Municipal Grant of \$414,000 is 2% of Municipality's net expenditures
- 11% of overall budget
- 1% of total capital requests

Revenue & Expenses





2025 Draft Budget Highlights

2025 Draft Budget Highlights – Childcare



Operations

- Administration part- time position from the budget on hold
- New childcare funding approach for delivery of childcare moves to Cost - based for children 0-5 years in 2025.
- New funding will provide supports for operating costs for Mississippi Mills Childcare Services and should increase current funding we receive.

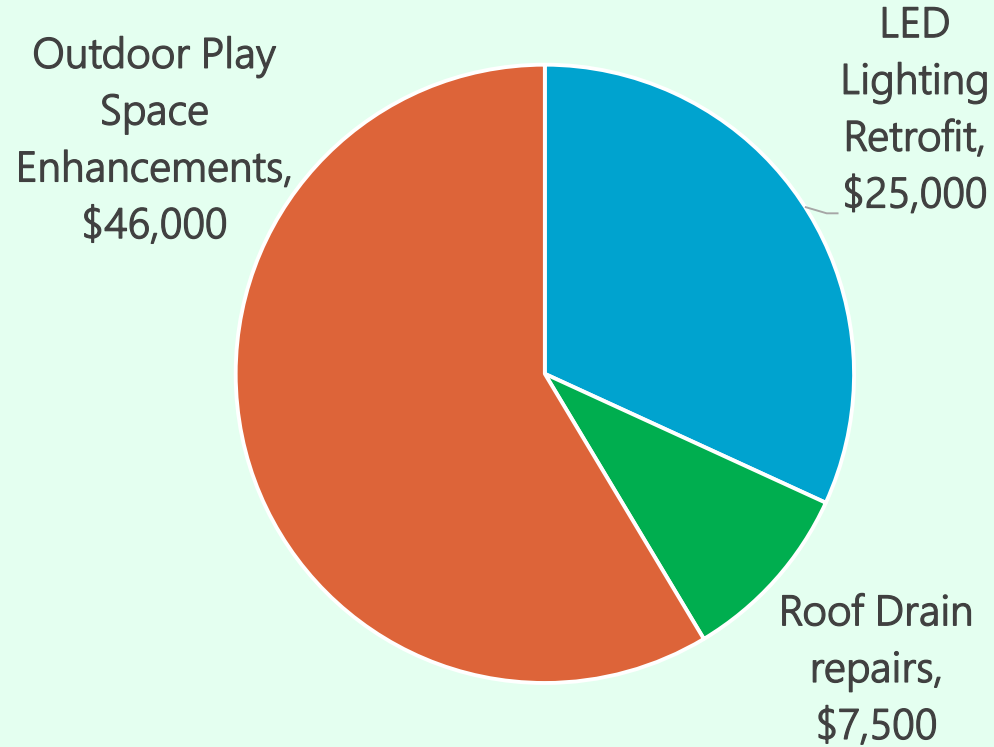
Capital

- LED lights provide a more cost effective alternative to current lighting at 208 State.
- Health and safety consideration for new drainage system.
- Designing outdoor space that allow for increased physical challenges that also strengthens functioning in cognitive areas.

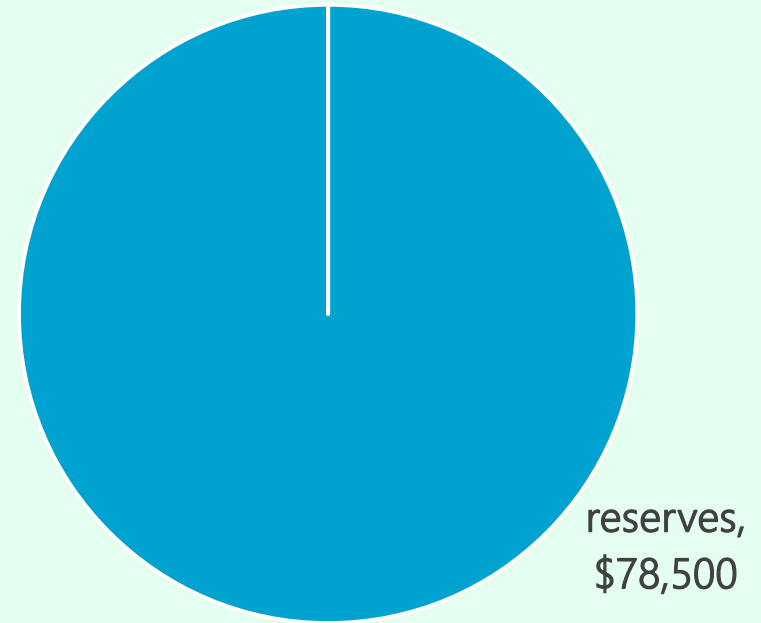
Draft Capital Budget – Childcare



Planned Spending \$78,500



Funding Sources



Draft Operating Budget – Childcare

	<i>2025 budget</i>	<i>2024 budget</i>
Revenues	\$ 3,145,756	\$ 3,052,831
Municipal Grant	\$ 414,706	\$ 258,228
Total Revenues	\$ 3,560,462	\$ 3,311,059
Salaries & Benefits	\$ 3,212,609	\$ 2,975,681
Materials & Supplies	\$ 224,503	\$ 218,466
Services & Rents	\$ 123,350	\$ 116,912
Total Expenses	\$ 3,560,462	\$ 3,311,059

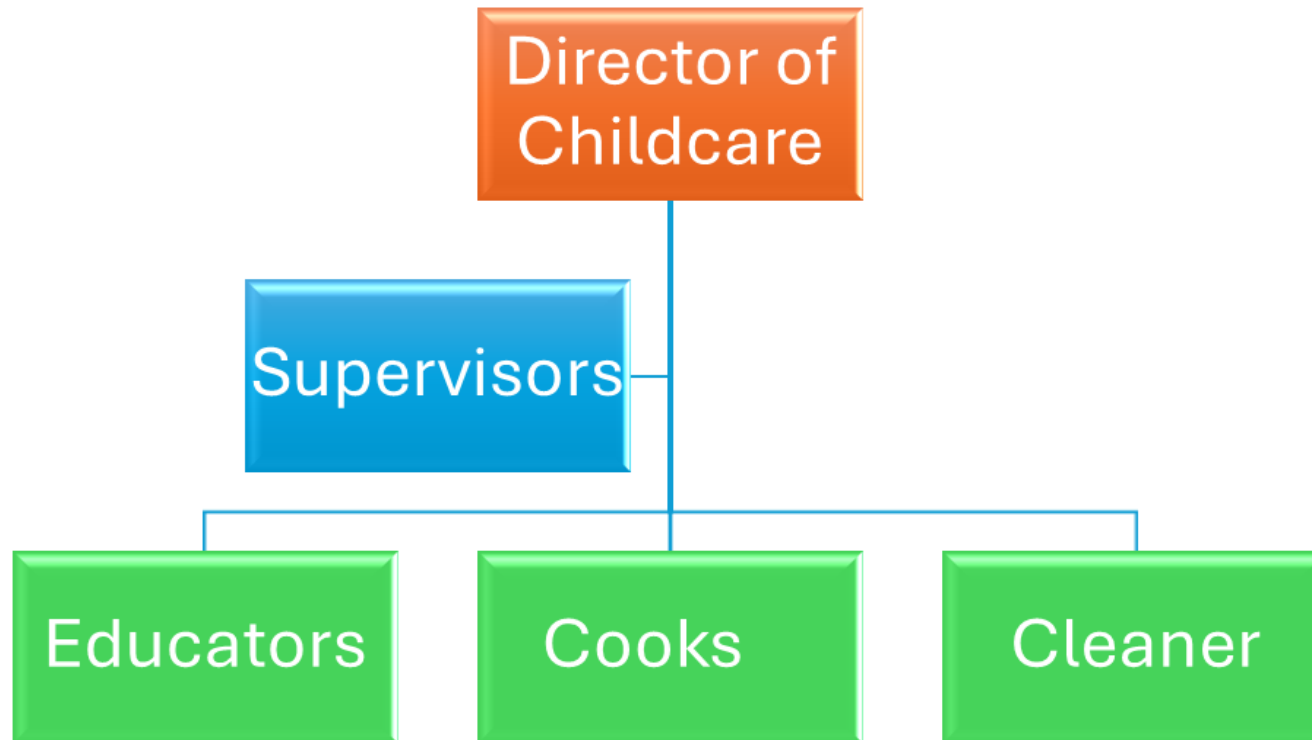


Draft Staffing Budget – Childcare

- Staff are hired to ensure we meet ratios in each program.
- 1:3 infants, 1:5 toddlers, 1:8 preschool, 1: 13 KGT and 1:15 School age.
- Hiring additional staff will allow us to register more children in our before and after programs and preschool
- 1/3 of the proposed Director of Community Services position has been included in the draft staffing budget



Organizational Chart / Staffing



Other Notes and Considerations

New cost – base funding approach to support the transition of \$10 per day average fees by the end of 2025-26.

Mississippi Mills Childcare Services families under the CWELLC system would see childcare base fees capped at \$22 per day in Infant/Toddler and Preschool programs effective Jan 1, 2025.

The focus on expansion of childcare facilities continues .



Questions?

